

# SalSphere® Style Protector

## Long-lasting hair styling and humidity protection

SalSphere® Style Protector is a system that locks style in place, shields hair from frizz-inducing humidity, and provides a radiant finish, leaving hair silky and shiny.

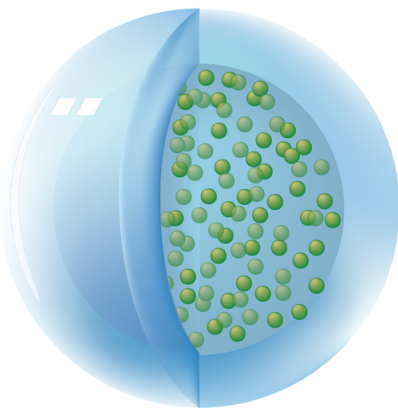
### COMBAT THE PROBLEMS

1. **Curls falling out**
2. **Frizzy, untamable fly-aways**
3. **Dullness due to heat of styling tools**

### CUTTING-EDGE TECHNOLOGY

SalSphere® Style Protector comprises hydrophobic sub-micron spheres (fig. 1) infused with phenyl trimethicone, encased by a shell made of a conditioning polymer.

This unique technology enables efficient deposition of sub-micron spheres onto the hair shaft, forming a protective layer. The release of silicone from the encapsulation is activated by heat, which seals the technology into the hair cuticle and prolongs the anti-frizz benefit. The protective layer provides humidity resistance, shine, and easy-to-manage hair.



**Figure 1.** Submicron sphere of SalSphere® Style Protector.

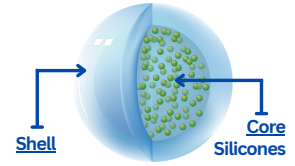


### EXPERIENCE THE BENEFITS

1. **Enhanced style retention**
2. **Immediate and long-lasting frizz control**
3. **Heat protection**
4. **Brighter, shinier hair**
5. **Longer residence time on hair**

SalSphere® Style Protector is designed to help extend the benefits of phenyl trimethicone by protecting it from fast evaporation.



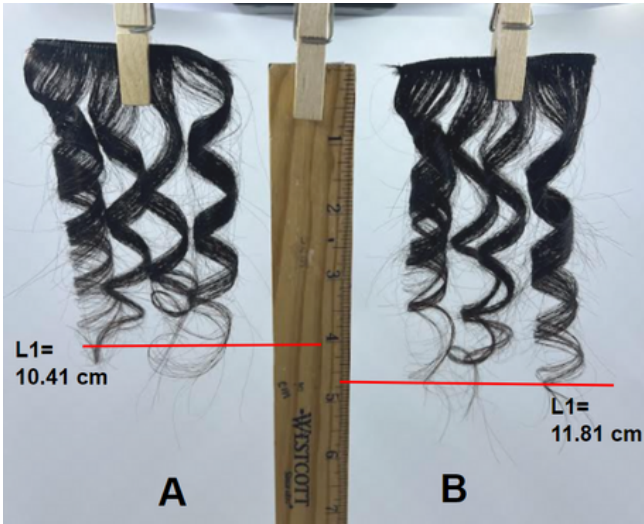


# SalSphere® Style Protector

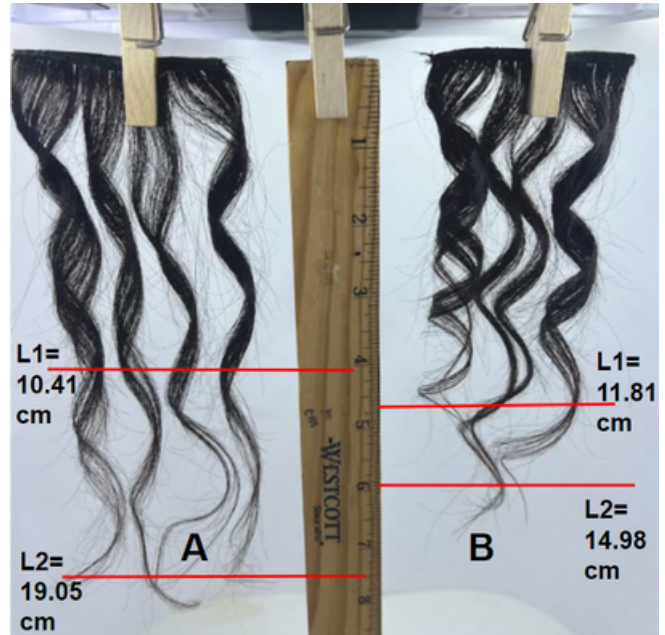
Long-lasting hair styling and humidity protection

## QUALIFICATION

A leave-in hair conditioner was applied to hair swatches then dried and heat-styled curly. One swatch had a leave-in containing no technology, the other hair swatch used the same leave-in conditioner with 10% SalSphere® Style Protector. A steam test was performed to determine the style retention.

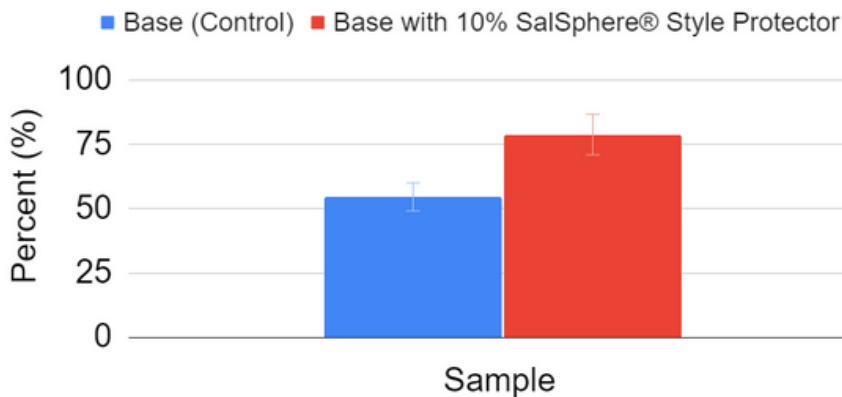


**Image 1.** Hair swatches before the frizz test. Hair with leave-in conditioner base containing no technology (A) and hair treated with leave-in conditioner base with 10% SalSphere® Style Protector 8388-05 (B). Length before test (L1) for A = 10.41 cm and B= 11.81 cm.



**Image 2.** Hair swatches after the frizz test. Hair with leave-in conditioner base containing no technology (A) and hair treated with leave-in conditioner base with 10% SalSphere® Style Protector 8388-05 (B). L1 is the length before exposure to steam, and L2 is the length after exposure. Length after test (L2) for A = 19.05 cm, and B = 14.98 cm.

### SalSphere® Style Protector Improvement in Style Retention



**Table 1.** SalSphere® Style Protector successfully controlled frizz and maintained the style. The control hair swatch had style retention of 54.64%, while the swatch containing SalSphere® Style Protector exhibited style retention of 78.83%! The technology improved overall style retention by 24.19%.

